

# Microsoft Desktop Optimization Pack (MDOP) Overview

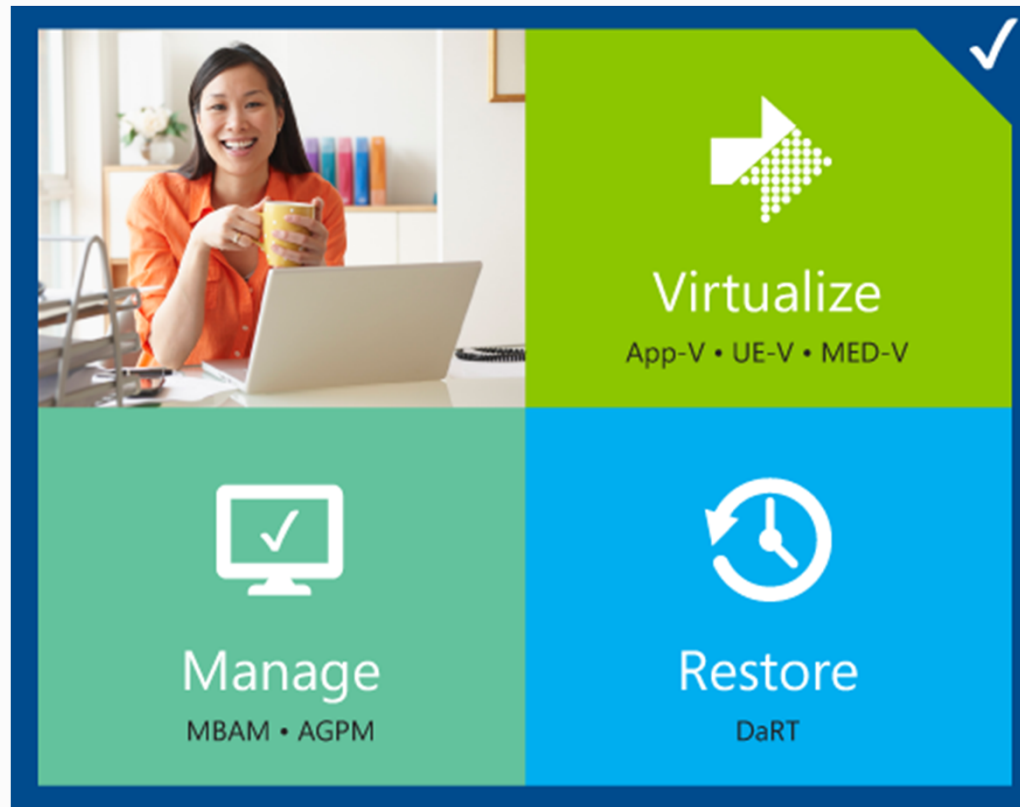
Steve Scholz

Windows Client and Device Specialist

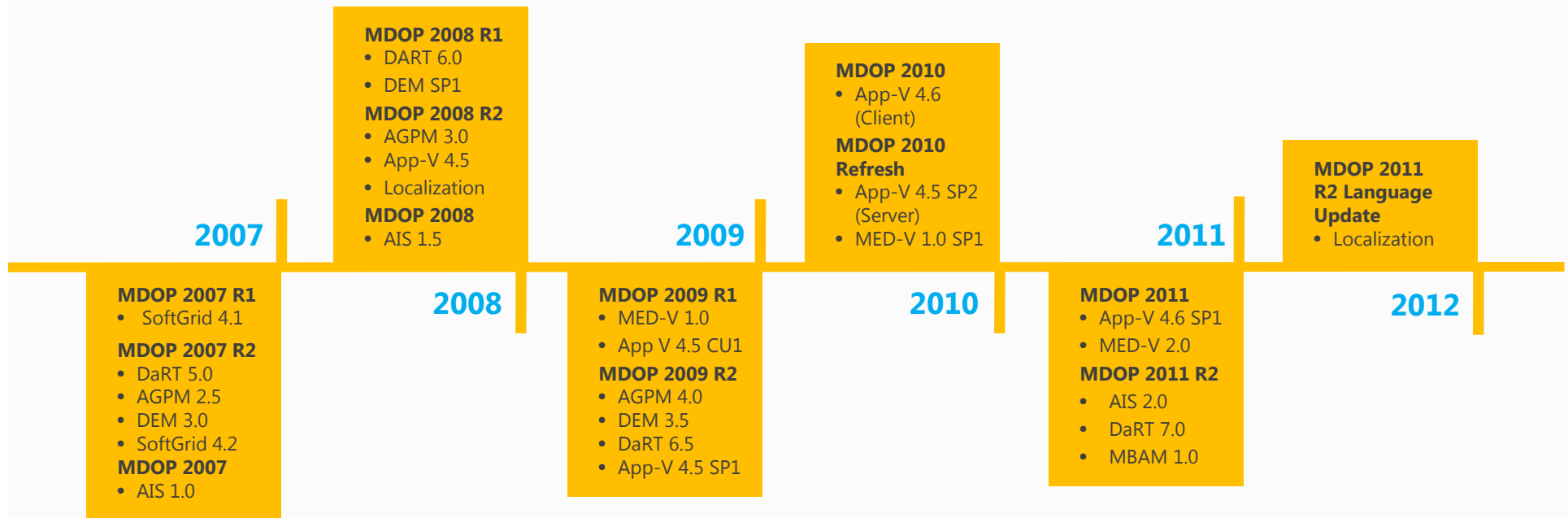
Microsoft

**Microsoft**

# What You Need to Know About MDOP



# MDOP: Continuous Enhancement

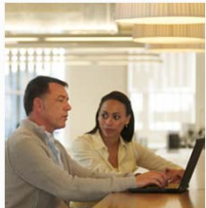


# Microsoft BitLocker Administration and Monitoring

Enterprise-class solution streamlines management of BitLocker



Simplify the deployment of BitLocker within your organization



Get BitLocker compliance status for your organization using inbox reports



Enable your Helpdesk to securely recover keys for users who have lost their PIN's or Passwords

*"We can use MBAM to get greater value from BitLocker. We can ensure that BitLocker is enabled and that we are compliant with corporate encryption mandates without taxing our employees or IT staff"*

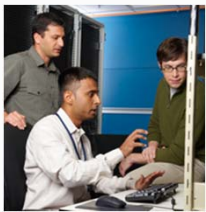
**Bob Johnson**

Director of IT  
BT in the United States and  
Canada

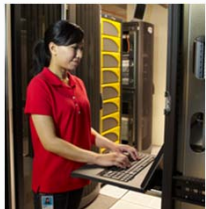
Microsoft®  
**BitLocker Administration  
and Monitoring**

# Microsoft Advanced Group Policy Management

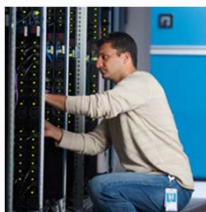
## Powerful change management for Group Policy



Delivers a simple, easily configurable way to delegate Group Policy changes



Enables changes to be verified and approved to reduce downtime and lower costs



Scales to provide change control and reporting for enterprise needs

*"Advanced Group Policy Management has been like a magic bullet for us. Its automated change management and workflow-enabled delegation capabilities are impressive. I wouldn't be able to manage GPOs without it."*

**Michael Wilcox**

MIS Client Services Supervisor  
Forsyth County

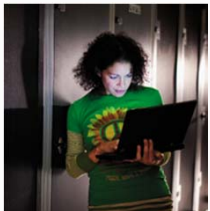
Microsoft®  
**Advanced Group  
Policy Management**

# Microsoft Enterprise Desktop Virtualization

Solves the “last mile” of application compatibility



Break through application compatibility barriers as you move to a modern operating system



Migrate legacy applications on your own schedule without losing productivity



Use the same management and deployment tools you use today; no dedicated infrastructure required

*“With MED-V, we can address compatibility issues that we don’t even know exist. If an application runs on Windows XP or Internet Explorer 6, it can run on Windows 7. It’s that simple and that monumental.”*

**James Van Ryn**

Windows Systems Engineer  
Applied Materials

Microsoft®

Enterprise Desktop  
Virtualization

# Introducing App-V 5.0



Integrated  
platform

- Virtual Application Extension makes virtual apps work as if locally installed
- Windows standards make virtual apps easier to troubleshoot
- No dedicated drive letter required



Flexible  
virtualization

- Virtual Application Connection lets multiple virtual apps work together
- Designed to support highly integrated applications
- Builds on investments in previous versions of App-V



Powerful  
management

- Optimize disk space in VDI with Shared Content Store
- Web-based UI allows IT pros to discover and use management features
- Centrally manage application interaction

# Microsoft Application Virtualization

## Anywhere productivity

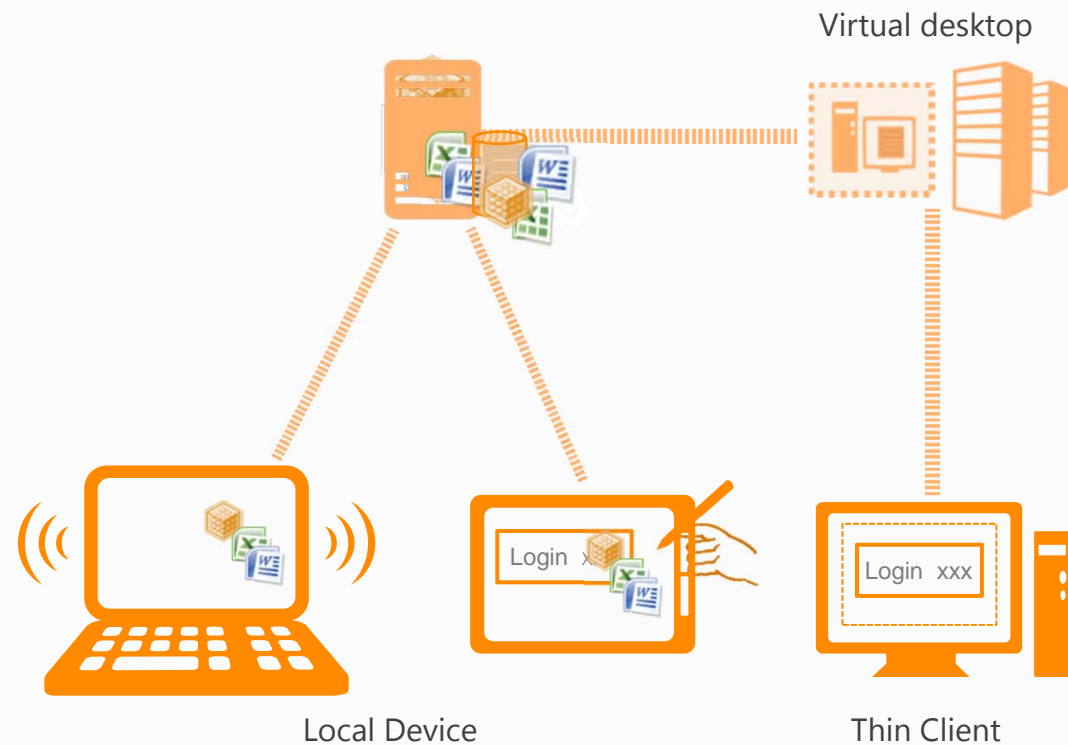
Access to applications on any device without installs

## Avoid business disruptions

Log in to retrieve applications and restore productivity

## Accelerate deployment

Faster provisioning of virtual applications on demand



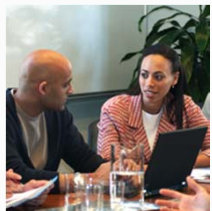


# Microsoft Application Virtualization 5.0

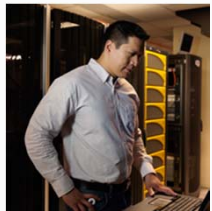
Transform desktop applications into centrally managed services



Users are productive anywhere with on-demand applications that work like they are locally installed



Extend the benefits of virtualization to highly integrated applications



Easy to use management lets IT deploy and service applications throughout their lifecycle

*"App-V reduces the cost of packaging applications by 80 percent and makes it easy for users to get the applications they need."*

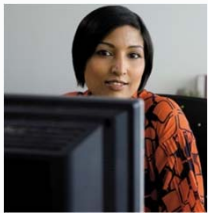
**Olivier Dury**

Senior Manager for E-Workplace Team, The Merck Group

Microsoft®  
**Application  
Virtualization**

# Microsoft Application Virtualization 4.6 SP1

Easy, Fast, Predictable



A streamlined and simplified packaging experience helps new users get started quickly.



Convert applications to App-V with Package Accelerators; reduce or eliminate the App-V learning curve.



Built-in best practices and flexible automation support makes packaging a consistent, reproducible process.

*"Even people with absolutely no virtualization experience can sequence applications."*

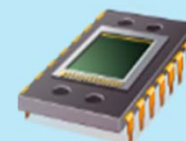
**Holger Brink**  
Managing Consultant  
Login Consultants

Microsoft®  
**Application  
Virtualization**

# Introducing DaRT 8

## Supporting Windows 8

- Utilize DaRT on Windows 8 Clients and Servers
- Support for GUID Partition Tables (GPT)
- Transparent UEFI machine boot integration



## Reimagining the Image Wizard

- Built on top of PowerShell cmdlets
- Native support for USB media deployment
- Supports WIM and ISO output formats
- Create 32/64 bit images from a single machine



## Improving Scripting Functionality

- Mount, create, apply, add, dismount, burn via scripting
- Four new DaRT cmdlets integrated with existing DISM cmdlets facilitates end-to-end scripting



# Identify, Repair, and Restore

## Key Enterprise Scenarios

Recover unbootable PCs

Access deleted files, repair disk partitions

Reset passwords

Detect and remove malware while offline

Prepare PC disks for donation

Centralized IT staff

## Microsoft DaRT Tools

Crash Analyzer, Computer Management

File Restore, Disk Commander

Locksmith

Defender Offline

Disk Wipe

Remote Connection

## Benefits

Restore productivity, faster  
Improve user experiences  
Repair instead of reimaging

Make PCs safer to use  
Reduce support costs  
Create a recovery plan

# Microsoft Diagnostics and Recovery Toolset

Accelerate desktop repair onsite and remotely



Identify the cause, repair the problem, restore productivity



Shift desktop repair planning from reactive to proactive



Simple recovery image creation and deployment

*"This toolset enables us to restore clients instantly without rebuilding them - saving up to six hours per instance."*

**David Smith**

Technical Support Center,  
UMC Health System

Microsoft®  
Diagnostics and  
Recovery Toolset

# Introducing UE-V

★ New Offering!



Personal  
& flexible

- App and OS personalization roam across Windows
- Syncs are smart and logins are fast
- Application or OS reconfiguration not required



Simple  
& versatile

- Templates automate identification of settings location
- Custom templates define which applications should roam settings
- Ability to roll back settings to initial state



Integrated  
& scalable

- Use existing tools to simplify deployment
- ConfigMgr 2012 DCM pack to keep client configuration consistent
- Seamlessly integrates with Microsoft Desktop Virtualization products

# Microsoft User State Virtualization

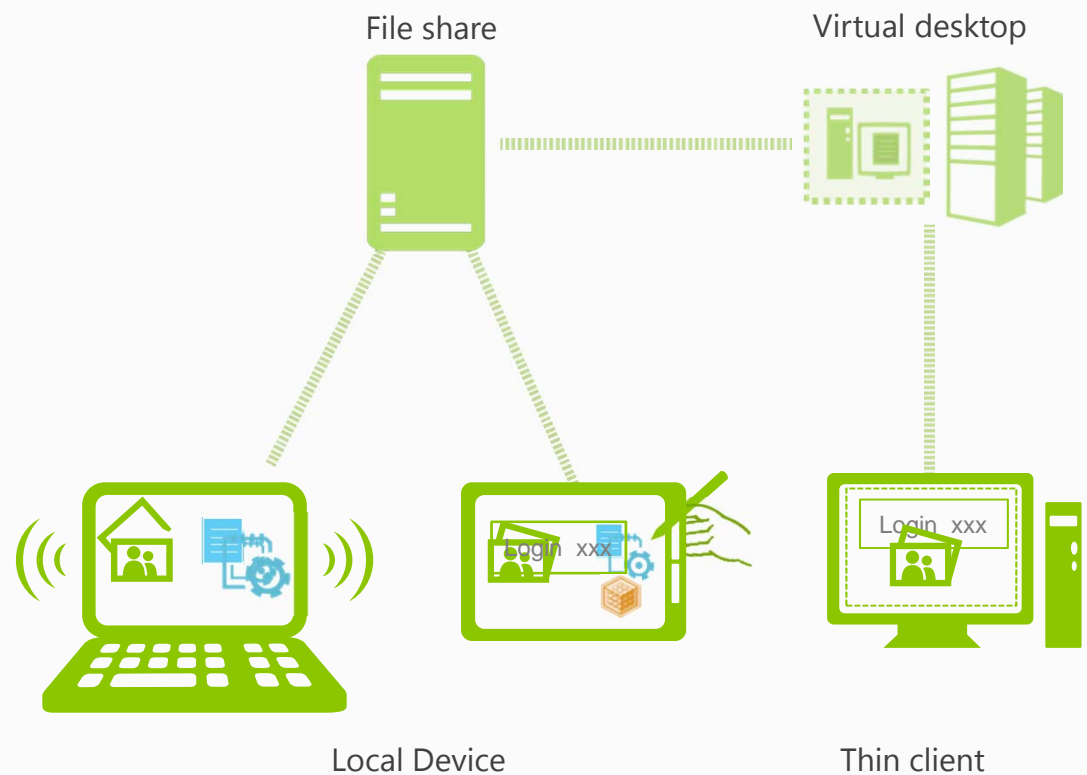
## Anywhere productivity

Access to data and personal settings on any device

## Avoid business disruptions

Log in to retrieve your data and restore productivity

\*Includes User Experience Virtualization (UE-V), Folder Redirection and Offline Files





# Microsoft User Experience Virtualization

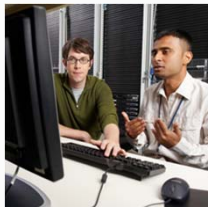
## Change the Device, Keep your Experience



Get a consistent, personal Windows experience that matches your unique workstyle



Easy for IT to deliver personal, user-defined experiences across many devices



Integrates and scales through existing management tools

*Available in a future  
MDOP release*

Microsoft®  
User Experience  
Virtualization



# What customers, press and analysts are saying

“By using App-V, we’ll be able to shrink the entire application deployment timeframe – from request through delivery – by more than 80 percent, from 30 days to just five days.”

**Stephen Dula, Qualcomm**

“MBAM fulfilled our three needs: an intuitive user interface for employees, functional reports that show up-to-date compliance status, and robust recovery key and auditing capabilities.”

**Bernard Carter, General Mills**

“The cost of not having an effective diagnostics and recovery plan in place was devastating. All of this has been resolved and we reduced overall costs by 10 percent by using a unified tool suite.”

**Ram Reddy P., Aurobindo Pharma**

“From what I can tell, [UE-V] is the final piece of the user state virtualization experience puzzle, and when combined with current capabilities like offline folders and folder redirection, a complete solution appears

**Paul Thurrott, Supersite for Windows**

“[With App-V 5.0] Microsoft is breaking down some of the inhibitors to application virtualization. It makes your applications work as if they are installed natively.”

**IDC Corp**

“MED-V helps ensure that we can move forward with an enterprisewide rollout of Windows 7 without getting sidetracked by application compatibility issues.”

**Alex Ramos, Royal Caribbean Cruises Ltd.**

“With AGPM what previously took a day is now done in five to ten minutes.”

**Simon Boxall, London Borough of Camden, U.K.**

# MDOP Reduces Annual IT Productivity Cost Per PC



69%  
Downtime



64%  
Help Desk



29%  
PC Management



69%  
PC Deployment

*Source: IDC 2011*

# Resources



[MDOP  
Homepage](#)

[MDOP Tech  
Center](#)

[Desktop  
Virtualization  
Tech Center](#)

[Windows  
for your  
Business  
Blog](#)

The Microsoft logo is displayed in white, italicized, sans-serif font against a solid blue background. The word "Microsoft" is followed by a registered trademark symbol (®).

© 2012 Microsoft Corporation. All rights reserved. Microsoft, Windows, Windows Vista and other product names are or may be registered trademarks and/or trademarks in the U.S. and/or other countries. The information herein is for informational purposes only and represents the current view of Microsoft Corporation as of the date of this presentation. Because Microsoft must respond to changing market conditions, it should not be interpreted to be a commitment on the part of Microsoft, and Microsoft cannot guarantee the accuracy of any information provided after the date of this presentation. MICROSOFT MAKES NO WARRANTIES, EXPRESS, IMPLIED OR STATUTORY, AS TO THE INFORMATION IN THIS PRESENTATION.