

Welcome to the first Microsoft MEEC Online Meeting of the school year!

If you have not downloaded the Lync client you will need to dial in to get audio. Please call.

Phone:

888-320-3585

Conference ID:

23164674



Focused • Skilled • Reliable

MEEC

How to Leverage Microsoft Assets

Microsoft and Bell Tech Account Team:

Jamie Bakert

Joanne Silvestri

Yanni Chryssomitis

Janet Immink

Account Technology Strategist

K-12 Account Manager

HiED Account Manager

Dir. Public Sector Bell Techlogix

Campus Agreement Product Offering

- Desktop with the Enterprise CAL Suite
- Microsoft Desktop Optimization Pack
- Expression Web
- Visual Studio Professional
- 0365
- Contacts
- Questions

Education Desktop

EDUCATION DESKTOP WITH ENTERPRISE CAL SUITE



Covers Faculty and Staff

Windows 7/8
Enterprise upgrade

Microsoft Office Professional Plus 2010 and Office for Mac 2011 and upgrade rights to next version

Microsoft Enterprise CAL Suites

Home Use Program (HUP) or Work at Home (WAH) rights for Faculty and Staff and local installation of Office on home computers

Rights to Run Windows and Office for Faculty and Staff in a VDI environments

*vda not included

Microsoft

Enterprise CAL Suite



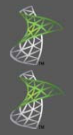
SharePoint Server ENTERPRISE
E-Forms / FAST Search / Dashboards



Lync Server ENTERPRISE
*Multi-Party Conferencing /
Online Meetings*



Exchange Server ENTERPRISE
*Unified Messaging / Archiving /
E-Discovery*



Forefront
Protection Suite
Email & SharePoint Protection / Web Filtering
Unified Access Gateway
Secure Remote Access



Windows
Rights Management Services
*Email and Document Information
Protection*



System Center
Client Management Suite
*Self-service Helpdesk / Back-up & Restore /
PC Monitoring*

Core CAL Suite



SharePoint Server STANDARD
Collaboration / Content Management



Lync Server STANDARD
IM/Presence / PC-to-PC Voice & Video



Exchange Server STANDARD
Email / Calendar / Address Book



Forefront Endpoint Protection
Antivirus / Antimalware Protection



Windows Server
*Server OS / Active Directory /
Authentication*

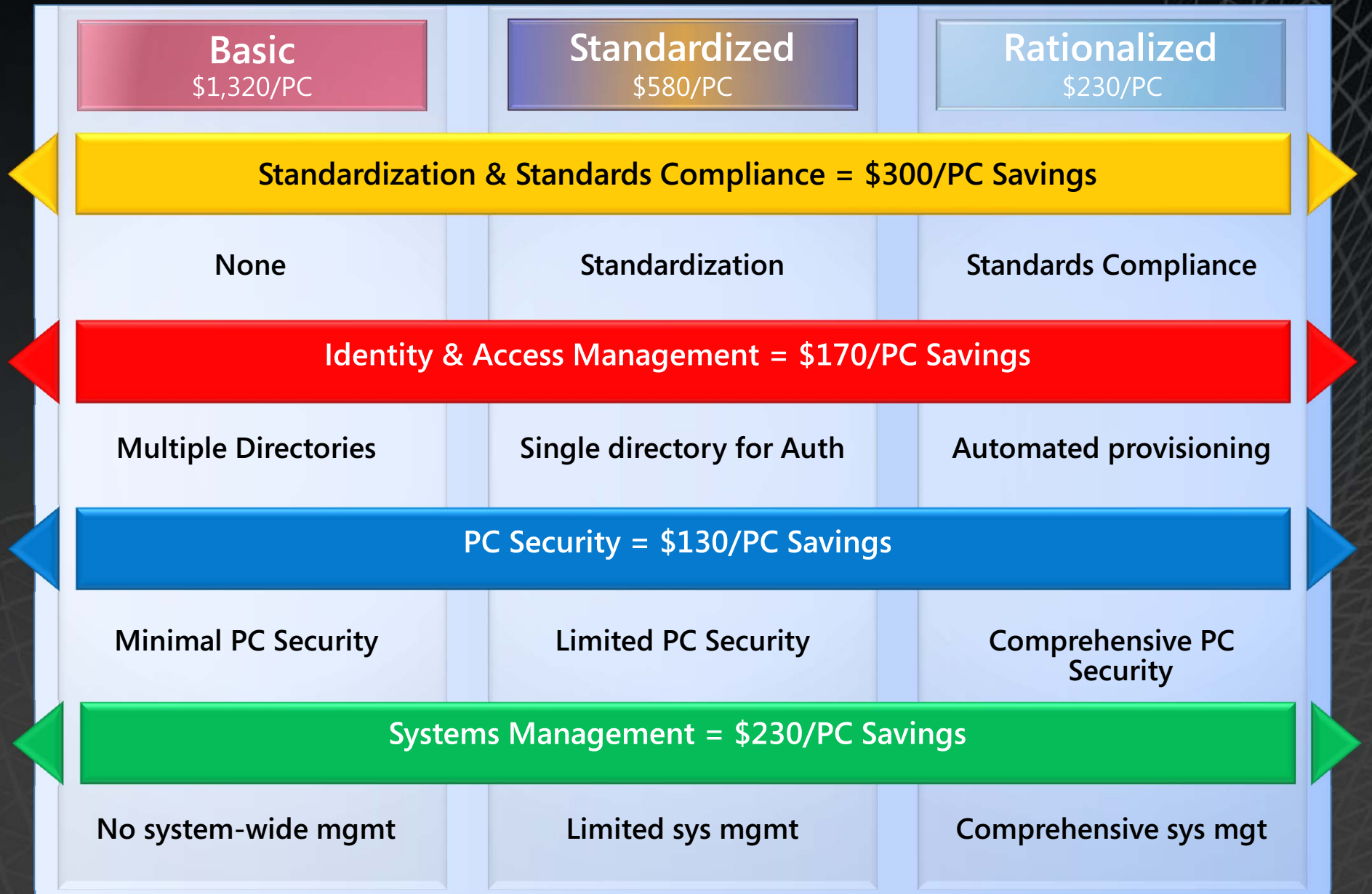


System Center CML
Configuration Manager
Manage Software / Updates / Assets

- Unified Communications
- Collaboration
- Enterprise Content Management
- Enterprise Search
- Business Intelligence



- Desktop and Device Management
- Access Management
- Incident and Change Management
- Data Protection and Recovery
- Security

Best Practices for Infrastructure Optimization



Microsoft Solution – Enterprise CAL Suite

Reduce costs through vendor consolidation.

IT & SECURITY PROCESS		IBM	\$74.46 per user
DATA PROTECTION & RECOVERY		IBM	\$78.00 per user
SECURITY & NETWORKING		symantec	\$62.50 per user
DESKTOP, DEVICE, & SERVER MANAGEMENT		ca	\$1.50 per user
IDENTITY & ACCESS MANAGEMENT		F5	\$1.00 per user
BUSINESS INTELLIGENCE		SAP	\$410 per user
SEARCH		Google	\$6.00 per user
CONTENT MANAGEMENT		EMC ² <small>Where Information Lives</small>	\$60.00 per user
COLLABORATION		IBM	\$399.00 per user
UNIFIED COMMUNICATIONS		CISCO	\$388.00 per user

\$1,480 per user

What You Need to Know About MDOP



Microsoft Application
Virtualization (App-V)

Microsoft User Experience
Virtualization (UE-V)

Microsoft Enterprise
Desktop Virtualization
(MED-V)

Microsoft BitLocker
Administration and
Monitoring (MBAM)

Microsoft Advanced
Group Policy

Management (AGPM)

Microsoft Diagnostics and
Recovery Toolset (DaRT)

Expressions Web

http://www.microsoft.com/expression/products/Web_Overview.aspx



Expression Web 4

- Create standards-based Web sites faster & easier
- Professional code editor & design surface
- Make your site stand out with rich graphics support
- Work with leading industry-standard technologies

Visual Studio Professional



Quickly interpret your code

The new code editor makes it easy to zoom in on your code, highlight method references, and overlay powerful features.

Spend less time debugging

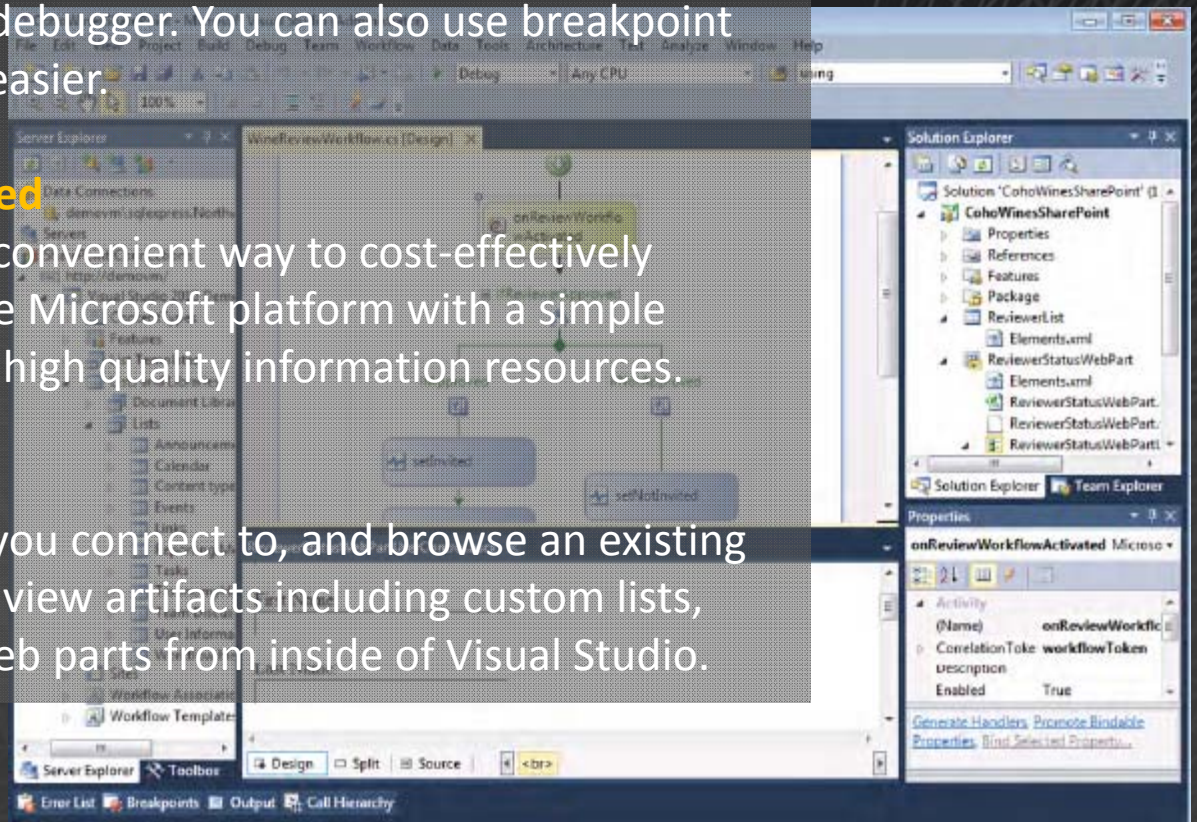
The inline call hierarchy helps quickly trace a program's execution flow without invoking the debugger. You can also use breakpoint labels to make debugging easier.

MSDN Subscription Included

MSDN Subscriptions are a convenient way to cost-effectively develop applications on the Microsoft platform with a simple licensing model and broad high quality information resources.

SharePoint Explorer

SharePoint Explorer helps you connect to, and browse an existing SharePoint Server. You can view artifacts including custom lists, document libraries, and Web parts from inside of Visual Studio.



O365 for Education

	Plan A3	Plan A4
	Office Pro Plus	Voice
	Home Use Rights Up to 5 PCs	Office Pro Plus
	Voicemail & Advanced Archive Capability	Home Use Rights Up to 5 PCs
	Access, Excel, Forms Visio Services	Voicemail & Advanced Archive Capability
Plan A2	Office Web Apps	Access, Excel, Forms, Visio Services
IM & Presence	IM & Presence	Office Web Apps
SharePoint Online - Collaboration	SharePoint Online - Collaboration	IM & Presence
Conferencing	Conferencing	SharePoint Online - Collaboration
Email, calendar, AV/AS, Personal Archive	Email, calendar, AV/AS, Personal Archive	Conferencing
Students		Email, calendar, AV/AS, Personal Archive
FREE	\$2.5/month	\$3.00/month
Faculty & Staff		
FREE	\$4.5/month	\$6.00/month

Estimated retail prices listed above per user, per month

ITAcademy

Microsoft IT Academy Program

[| Apply Now](#) [| Member Sign In](#) |

[Home](#)

[Overview](#)

[Benefits](#)

[Career Paths](#)

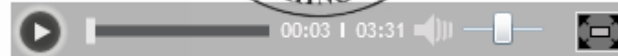
[Success Stories](#)

[Academy Locator](#)

[Contact Us](#)

Future Ready Skills

The Microsoft IT Academy provides students with the future ready technology skills they need to be successful in college and a career.



[More Success Stories](#)

Become a
Microsoft IT Academy



Student
Employability



Educator
Development



Translate this page

Spanish

Microsoft® Translator

Microsoft®
IT Academy
Program

[Apply Now](#)

Contacts

Microsoft

Jamie Bakert – jamie.bakert@microsoft.com
410-446-0029
Account Technology Strategist

Joanne Silvestri – jsilves@microsoft.com
215-896-9555
Account Manager – K12 Public and Private Schools

Yanni Chryssomitis – yannic@microsoft.com
703-628-5650
Account Manager – Higher Education and Libraries

Bell Techlogix

Bryan Zatkulak - bzatkulak@belltechlogix.com
888-989-8560
USM Institutions and JHU Affiliates

Dana McNeil - dmcneil@belltechlogix.com
877-394-7900
All K-12 Private Schools and K-12 Public Schools M-Z

Lisa Goolsby - lgoolsby@belltechlogix.com
877-213-5990
Public Libraries, Community and Private Colleges, and K-12 Public Schools A-L

Janet Immink - jimmink@belltechlogix.com
888-423-5533
Director

Sarah Taggart - staggart@belltechlogix.com
800-962-3550
Sales



QUESTIONS?

Three Server Platform Licensing Options

See Appendix for a detailed list of products included for unlimited deployment

CAL Product	Server Platform	Server Products Included for Unlimited Deployment
Core CAL Suite	Core Server Platform	<ul style="list-style-type: none">• All associated servers – All editions, including Windows HPC• All associated external connectors, including MOSSFIS• All associated server MLs
Enterprise CAL Suite	Enterprise Server Platform	<ul style="list-style-type: none">• All associated server products• SMSD• Forefront TMG Server• Forefront UAG Server• FAST Search for SharePoint
SQL Server CAL	SQL Server Platform	<ul style="list-style-type: none">• SQL Server — All Editions• BizTalk Server – All Editions

Server Platform licensing also available for each individual Client Access License via amendment, provided all other requirements are met.